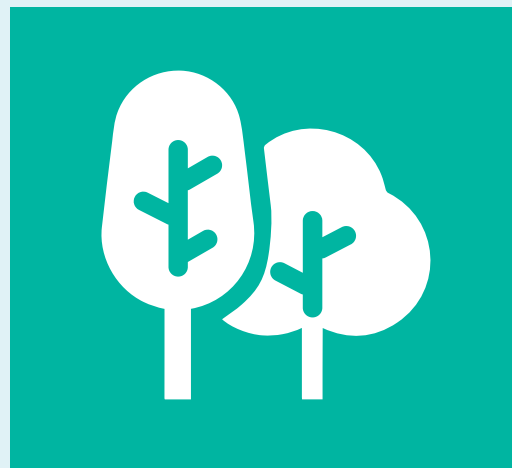




Lausanne Movement
Creation Care



Creation Care Issue Network

2025

Growth Reflection

Based on the Lausanne Issue Network Health Framework



Why Health Matters

The health of a network determines its ability to bear fruit that lasts.

The Issue Network Health Assessment exists to help catalysts and your teams reflect prayerfully on the state of your network and discern what the Spirit may be inviting you to nurture next.

This process is not evaluative but formative – an opportunity to pause, celebrate, and re-root in God’s calling.

As the Creation Care Issue Network participates in this growth reflection, the focus is on deepening vitality, strengthening connections, and extending impact.

Health, in this context, is not static but dynamic: a continuous process of tending the soil, pruning where needed, and rejoicing in new growth.



Understanding the Report

Each assessment question was rated on a 1–5 scale, producing average scores for each area of health. These scores correspond to stages of health that are relevant to Creation Care’s size and growth stage, and are:



(Your top 3 scores)

Flourishing and healthy



(Your middle 6 scores)

Active growth, but with room for strengthening



(Your bottom 3 scores)

Fragile or underdeveloped, requiring renewed focus



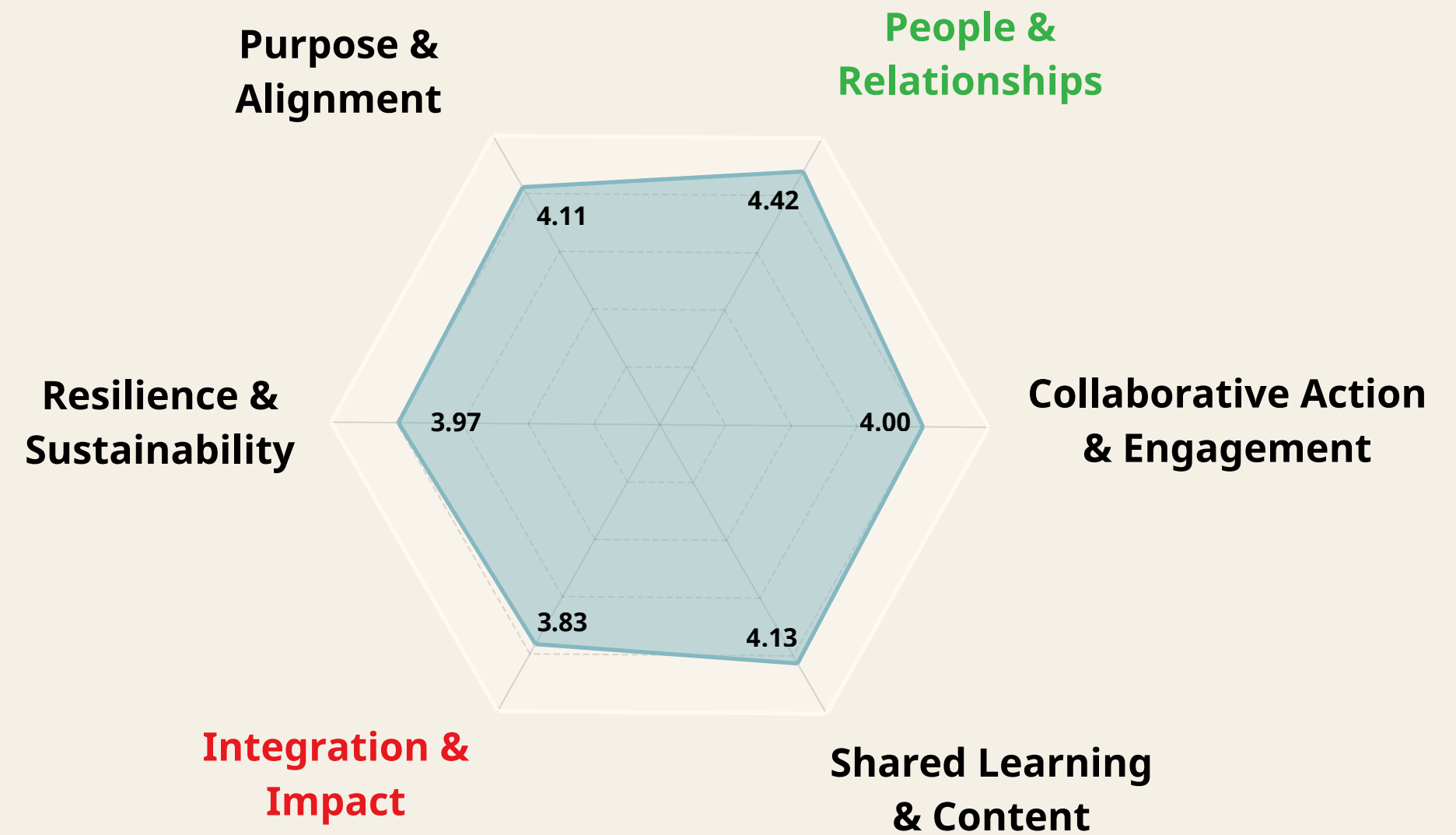
Assessment Summary

Overall Network Health Status



THRIVING

The Creation Care Issue Network is thriving, marked by Christlike leadership, global diversity, and multiplication. Strengthening communication, structured impact reflection, and sustainable resourcing will help translate steady this momentum into broader participation, and lasting missional fruitfulness.



These numbers reflect the combined scores of the 2 areas of assessment under each dimension of health.





Purpose & Alignment

Spiritual vitality and strategic clarity rooted in God's purposes





Spiritual Vitality

How rooted the network is in prayer, biblical truth, and dependence on the Holy Spirit as the foundation for all vision and collaboration.

STATUS



Living

Average Score

4.11

Range

3.2–5.0

Variance

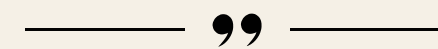
Low–Moderate

Reflection

A deep sense of God’s presence clearly anchors Creation Care, with Spirit-empowered confidence shaping your mission and direction. Prayer, Scripture, and dependence on God are valued and practiced. The opportunity now is greater intentionality so biblical reflection and discernment more consistently guide planning, priorities, and shared decisions.

Encouragement

Your work is Spirit-led and prayerfully grounded. The next step is intentional rhythm – build regular spaces for Scripture, worship, and discernment so planning flows from listening.



When prayer and dependence on the Spirit anchor your work, every strategy becomes an act of worship and obedience.





Vision & Objectives

The degree to which the network operates with clearly defined, Spirit-aligned purpose and measurable, obtainable objectives that directly contribute to Lausanne's fourfold vision.

STATUS



Living

Average Score

4.11

Range

2.8–4.5

Variance

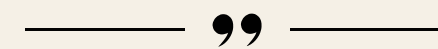
Low–Moderate

Reflection

The network is united around a compelling, biblically grounded vision that members understand and can articulate. Strategies largely reflect this shared direction with integrity. However, some objectives remain too general, and action plans lack consistent follow-through. Greater clarity and accountability will help vision translate into measurable, Spirit-led progress.

Encouragement

Your vision is clear and shared. The next step is focus – refine measurable, Spirit-discerned objectives and formalise next steps with ownership so progress becomes consistent.



Clarity of purpose gives direction; when your vision is Spirit-led and shared, the network grows with unity and confidence.



Additional Reflections



Spiritual Atmosphere

Described by words like **inspiring, engaged, community, life, growing, alive and guiding, encouraging** but also **fervently seeking**, revealing a community that is vibrant and hopeful, yet still listening intently for the Spirit's leading as it grows.



Vision Metaphors

Common imagery included a seedling and a sunrise. 🌱🌅
This suggests growth paired with fresh hope, though also a desire for greater things to come.





People & Relationships

Christlike leadership and inclusive, polycentric community with shared values





Leadership & Governance

The effectiveness, integrity, and structure of the network's leadership – how leaders model Christlikeness, provide direction, share decision-making, and uphold good governance.

STATUS



Thriving

Average Score

4.39

Range

3.3–5.0

Variance

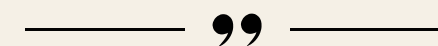
Low–Moderate

Reflection

Leadership of Creation Care is marked by deep Christlike character, humility, and integrity that nurture trust across the network. Direction is clear, spiritually grounded, and offered with care. As the network grows, clarifying governance structures and accountability processes will ensure shared understanding, responsiveness, and long-term health.

Encouragement

Your leaders model Christ with relational commitment. The next step is transparency – document your governance and accountability so growth remains inclusive and trusted.



Servant-hearted leadership nurtures trust and credibility – where humility guides, integrity protects, and shared decision-making brings peace.





Diversity & Inclusivity

The breadth of the network's representation (across cultures, ethnicities, genders, denominational traditions, and generations) and how intentionally it includes and values all voices in unity.

STATUS



Thriving

Average Score

4.44

Range

3.2–5.0

Variance

Low–Moderate

Reflection

The network reflects the global church with visible diversity across cultures, generations, and traditions, and a strong sense of belonging marked by honour and trust. Younger leaders are being welcomed and developed. The inclusion of underrepresented voices will enhance growth in this area.

Encouragement

Your community reflects God's kingdom with warmth and honour. The next step is consistency – create regular pathways for underrepresented voices and broaden professional expertise.

— — — — — “ — — — — —

When every culture, generation, and voice is valued, the network reflects the fullness of Christ's body in mission.



Creation Care

Growth Reflection | 2025

Additional Reflections



Conflict Resolution

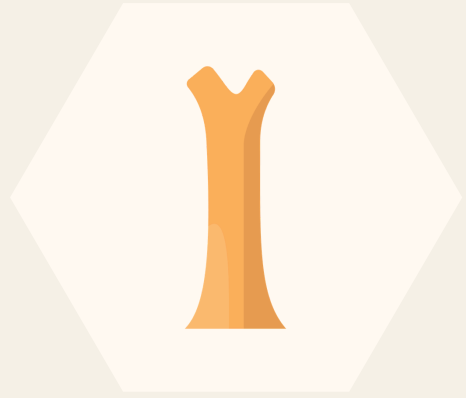
If a disagreement arose, most envision **healthy dialogue**, though some anticipate **stalling** – indicating a generally strong foundation of trust, though confidence in timely resolution may not yet be shared by all.



Network Diversity

Diversity in the network is mostly **cultural/ethnic**, although representation of **gender** as well as **geographic** diversity is also recognised. There is a need to diversify across **professional lines**.





Collaborative Action & Engagement

Trusting partnerships and clear
communication, upholding unity





Collaborative Engagement

The degree to which the network fosters participation, trusting partnerships marked by shared initiatives, mutual support, and unified pursuit of its mission.

STATUS



Living

Average Score

4.15

Range

3.3–5.0

Variance

Low–Moderate

Reflection

Relational trust and shared prayer create a strong foundation for collaboration, and partnerships are beginning to mature into tangible, mission-driven action. Diverse voices are shaping strategy. Yet engagement across the wider membership is uneven, and collaboration would benefit from clearer follow-up and shared accountability.

Encouragement

You are relationally strong. The next step is clarity – strengthen follow-up rhythms and define shared responsibilities so collaboration becomes consistent and network-wide.



True collaboration is born from trust; when members serve one another, and shared mission flourishes beyond individual strength.





Communication

The effectiveness of communication within the network (between members and leadership) and to external stakeholders (to the broader Lausanne Movement, church, and public).

STATUS



Thirsty

Average Score

3.85

Range

3.2–4.2

Variance

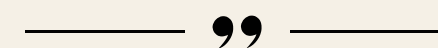
Low–Moderate

Reflection

Meetings and digital touchpoints are helping members stay connected, and communication carries spiritual warmth alongside practical updates. However, accessibility varies across regions and languages, and vision messaging does not yet reach everyone consistently. Feedback pathways will help deepen participation and share direction.

Encouragement

Your communication is warm and connective. The next step is inclusion – simplify channels, strengthen language accessibility, and create reliable feedback loops so all voices shape direction.



Healthy networks speak with clarity and grace – amplifying vision, inviting participation, and ensuring every member is heard.



Additional Reflections



Collaborative Relationships

There is a strong sense of collaborative potential within the network. Everyone could name 3 people they could collaborate with on a shared initiative.



Communication Channels

Information flows mainly through Email, but also WhatsApp – reflecting accessible communication platforms.





Shared Learning & Content

Thoughtful theological reflection,
missional leadership, motivating and
equipping the outworking of the vision





Content & Training

Does the network equip others through quality, theologically grounded resources and training that meet real missional needs in diverse contexts?

STATUS



Living

Average Score

4.04

Range

2.8–4.7

Variance

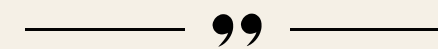
Moderate

Reflection

Your content is rich, biblically grounded, and clearly serving others, supported by a growing rhythm of shared learning across the network. Yet stories are not consistently captured or shared, and distribution remains limited to a few channels. Expanding formats and storytelling practices will broaden reach and deepen influence.

Encouragement

Your resources are strong, and learning is growing. The next step is amplification – widen distribution formats and establish regular storytelling rhythms to extend impact.



Networks that equip others through biblically grounded learning multiply wisdom and strengthen the church for global witness.





Thought Leadership

The extent of the network's contribution to biblically faithful, Spirit-led insight that shapes global mission thinking and guides others in their practice.

STATUS



Living

Average Score

4.22

Range

2.8–4.8

Variance

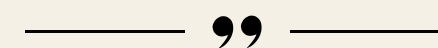
Moderate

Reflection

Recognised voices are contributing meaningfully to global mission dialogue, offering fresh and credible theological insight. Invitations to engage are welcoming and accessible. Yet resources still tend to circulate within familiar circles, and wider influence remains limited. Strengthening reach and engagement will extend your reach beyond the network.

Encouragement

Your voice is already being heard in key spaces. The next step is widening influence – strengthen distribution and create more frequent entry points for others to engage.



Spirit-led thought leadership inspires the church to think deeply, act courageously, and pursue mission with prophetic clarity.



Additional Reflections



Most Shared Content

<https://lausanne.org/statement/good-news-for-all-the-earth>

<https://www.lwccn.com/pollinator>

<https://lausanne.org/global-classroom/creation-care-episode>

<https://resources.arocha.org/resource/making-a-world-of-difference/>



The Network's Voice

Most judge Creation Care's voice as **emerging but growing**, while others see it as only **occasionally heard** or **mostly internal**. There were 2 responses believing Creation Care's voice is **clear and respected**.





Integration & Impact

Shared initiatives marked by innovation and relevance, achieving tangible global impact





Missional Impact

The degree to which the network makes a meaningful spiritual and strategic difference in fulfilling its mission.

STATUS



Thirsty

Average Score

3.67

Range

2.5–4.3

Variance

Low–Moderate

Reflection

Clear, Spirit-led outcomes are evident, and Creation Care can name ways it is advancing the Great Commission. However, reflection on impact is occasional rather than structured, and links to Lausanne’s broader vision are not consistently articulated. Inconsistent data and storytelling limit a full understanding of influence.

Encouragement

Your impact is real and Spirit-shaped. The next step is rhythm – establish regular review moments and simple tools to gather stories and data that clarify your contribution.

— — — — — “ — — — — —

Healthy networks bear visible fruit – lives changed, communities renewed, and the gospel taking root where it was once absent.





Adaptability & Innovation

The ability to adjust and innovate in response to changing circumstances or challenges, maintaining effectiveness and mission faithfulness over time.

STATUS



Living

Average Score

3.98

Range

3.2–5.0

Variance

Low–Moderate

Reflection

Creation Care shows healthy response to global realities, addressing challenges with maturity and unity rather than avoidance. Yet feedback is not consistently normalised, and Spirit-led discernment does not always shape innovation in a visible way. Embedding learning and prayerful reflection will strengthen adaptability and innovation.

Encouragement

Your responsiveness is healthy and timely. The next step is integration – normalise feedback and make prayerful discernment central in innovation so learning response grow.



Spirit-led innovation keeps the network fresh – ready to respond with courage, creativity, and faith to changing mission needs.



Additional Reflections



Network Impact

The most prevalent impact is **missional awareness** and **personal transformation**, although there were mixed views as to Creation Care impacting **communities** or forming **new partnerships**.



Innovation Culture

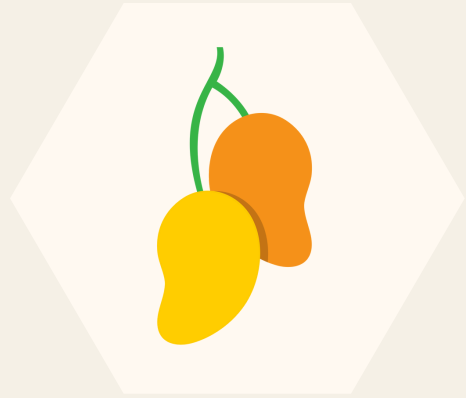
Most common responses:

🚲 Bicycle – Slow but steady, powered by a few

🚗 SUV – Reliable and adaptable, but lacks speed

The network sees itself as reliable and steady, yet dependent on a small core to sustain movement and momentum.





Resilience & Sustainability

Resources and generational continuity, ensuring longevity and multiplication beyond the network





Resources

The ability of the network to steward finances, people, and knowledge with transparency and interdependence, ensuring sustainability for its calling.

STATUS



Thirsty

Average Score

3.69

Range

2.5–4.8

Variance

Moderate

Reflection

An open-handed culture of sharing is evident, with knowledge and tools flowing generously across the network and beyond. Yet limited time, capacity, and funding constrain consistency and reach. Faith-driven planning would be strengthened by regular sustainability assessments and more intentional mobilisation of resources.

Encouragement

Your generosity is blessing others. The next step is sustainability – assess capacity regularly and mobilise time, skills, and funding more intentionally so momentum remains.

— — — — — “ — — — — —

Stewardship done in unity – sharing time, gifts, and finances – builds interdependence that sustains mission beyond any one generation.





Multiplication

The extent to which the network cultivates leaders, initiatives, and contextual expressions that carry the vision forward with generational continuity and global reach.

STATUS



Thriving

Average Score

4.24

Range

3.0–5.0

Variance

Moderate

Reflection

A strong commitment to discipleship and leader development is evident, and new initiatives are emerging with clear purpose. However, regional growth can feel disconnected or uneven. Strengthening structures for shared support will help reproduction become more sustained and network-wide.

Encouragement

Your desire to multiply is clear. The next step is coordination – strengthen working groups with clear support, communication, and connection so regional growth becomes sustained.

— — — — — “ — — — — —

When leaders reproduce leaders and vision gives birth to new expressions, the network ensures lasting fruitfulness for God's glory.



Additional Reflections



Resources

Most feel confident that the network can be sustained over the next year, yet the greatest present needs are:

Financial support

Administrative systems

Volunteers or leaders



Multiplication and Growth

Most common responses:

💧 Trickling Stream – Small beginnings

🌊 Flowing river – consistent multiplication

But also 🚧 Blocked stream – something is blocking the desire

Multiplication is present but uneven – with signs of steady growth, alongside perceived obstacles that are slowing what many long to see flourish.



Visual Dashboard Summary



THRIVING AREAS
3



LIVING AREAS
6



THIRSTY AREAS
3



Suggested Next Steps



Annual Vision Alignment

Annually reflect on how your work advances Lausanne's vision and your network's purpose.

Evaluate Holistic Impact

Evaluate impact using both qualitative stories and quantitative data.

Identify Impact Drivers

Identify areas where your work has made a tangible difference – and why.



Create Resourcing Plan

Create a plan for resourcing that reflects faith, sustainability, and generosity.

Assess Resource Needs

Develop a rhythm for regularly identifying and addressing resource needs.

Practice Financial Transparency

Practice financial transparency by sharing clear updates with the network.



Choose Accessible Platforms

Choose communication platforms that are accessible and relevant across your regions.

Share Vision Regularly

Schedule regular sharing of your network's vision and updates with members and the wider church.

Invite Feedback Often

Actively invite feedback and demonstrate that it shapes your network's direction.

Voices of Reflection

Final recorded thoughts

Under-Resourced but Faithful

"It's a little under-resourced."

Limited resourcing shapes the network's capacity, even as it continues doing its best.

Growing Understanding of the Network

"Not fully comprehended... or fully appreciated within Christian circles."

Creation Care still needs to be understood and appreciated within evangelical contexts, though steady progress is being made.



In closing...

The Creation Care Issue Network reflects vibrant growth shaped by hope, humility, and Spirit-led conviction. Your commitment to stewarding God's creation is bearing fruit. May the Lord deepen your discernment, steady your momentum, and cause your work to flourish for generations to come.

*"...that they may be called oaks of righteousness,
a planting of the Lord for the display of his splendour."*

- Isaiah 61:3b

