



Lausanne Movement
Hinduism



Hinduism Issue Network

2025

Growth Reflection

Based on the Lausanne Issue Network Health Framework



Why Health Matters

The health of a network determines its ability to bear fruit that lasts.

The Issue Network Health Assessment exists to help catalysts and your teams reflect prayerfully on the state of your network and discern what the Spirit may be inviting you to nurture next.

This process is not evaluative but formative – an opportunity to pause, celebrate, and re-root in God’s calling.

As the Hinduism Issue Network participates in this growth reflection, the focus is on deepening vitality, strengthening connections, and extending impact.

Health, in this context, is not static but dynamic: a continuous process of tending the soil, pruning where needed, and rejoicing in new growth.



Understanding the Report

Each assessment question was rated on a 1–5 scale, producing average scores for each area of health. These scores correspond to stages of health that are relevant to Hinduism’s size and growth stage, and are:



(Your top 3 scores)

Flourishing and healthy



(Your middle 6 scores)

Active growth, but with room for strengthening



(Your bottom 3 scores)

Fragile or underdeveloped, requiring renewed focus

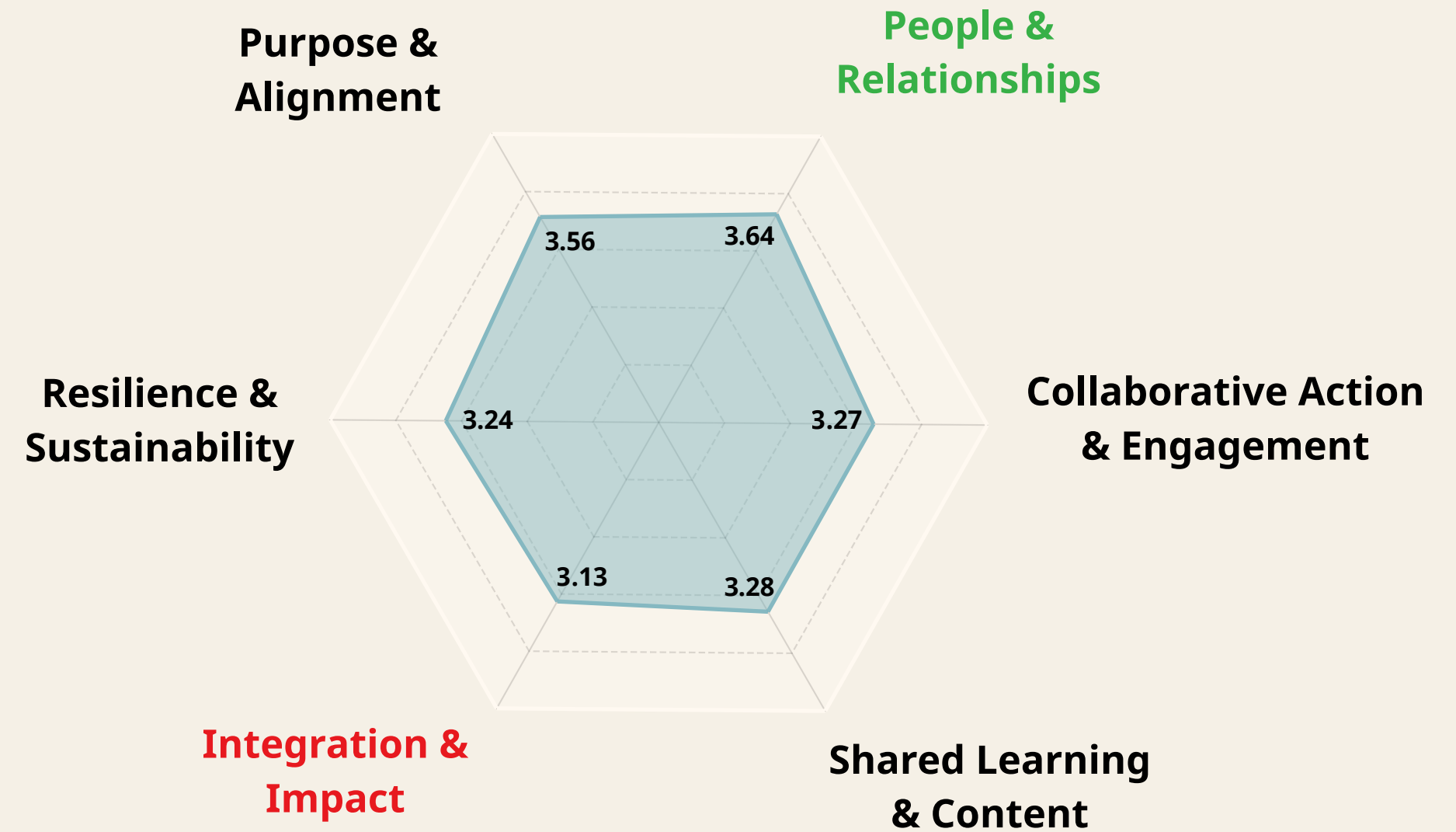
Assessment Summary

Overall Network Health Status



GROWING

The Hinduism Issue Network shows steady growth, marked by shared conviction, emerging unity, and spiritually grounded leadership. Strengthening clear communication, structured impact evaluation, and sustainable resourcing will help translate growing collaboration into clearer direction, broader engagement, and lasting missional fruitfulness.



These numbers reflect the combined scores of the 2 areas of assessment under each dimension of health.





Purpose & Alignment

Spiritual vitality and strategic clarity rooted in God's purposes





Spiritual Vitality

How rooted the network is in prayer, biblical truth, and dependence on the Holy Spirit as the foundation for all vision and collaboration.

STATUS



Living

Average Score

3.45

Range

1.8–5.0

Variance

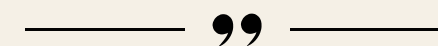
High

Reflection

There is clear confidence that your work is aligned with God's purposes, and members experience His empowering presence in mission. Yet communal prayer and shared spiritual practices are infrequent, and Scripture is not consistently central in planning. Deepening shared rhythms will strengthen unity and collective discernment.

Encouragement

Your mission is Spirit-empowered and purposeful. The next step is rhythm – schedule regular spaces for prayer, Scripture, and shared discernment to anchor decisions together.



When prayer and dependence on the Spirit anchor your work, every strategy becomes an act of worship and obedience.





Vision & Objectives

The degree to which the network operates with clearly defined, Spirit-aligned purpose and measurable, obtainable objectives that directly contribute to Lausanne's fourfold vision.

STATUS



Thriving

Average Score

3.67

Range

2.0–5.0

Variance

Moderate–High

Reflection

There is strong conviction that Hinduism's vision can only be fulfilled together, and members recognise the necessity of unity and shared effort. While objectives are present, some remain broad or loosely defined. Sharpening clarity and measurability will help align aspiration with realistic, mission-focused progress.

Encouragement

Your unity around shared mission is a strength. The next step is precision – refine objectives to be concrete, measurable, and clearly aligned with Lausanne's broader vision.



Clarity of purpose gives direction; when your vision is Spirit-led and shared, the network grows with unity and confidence.



Additional Reflections



Spiritual Atmosphere

Described by words like **prayer**, **uplifting**, **unity**, **networking**, but also **yet to explore**, **vague**, and **lukewarm**, revealing a mixed experience across the team.



Vision Metaphors

Common imagery included a seedling, a bridge, and a blank canvas. 🌱🏗️🎨
This suggests something emerging and still being shaped with space for new expression and direction.



People & Relationships

Christlike leadership and inclusive, polycentric community with shared values





Leadership & Governance

The effectiveness, integrity, and structure of the network's leadership – how leaders model Christlikeness, provide direction, share decision-making, and uphold good governance.

STATUS



Thriving

Average Score

3.64

Range

2.0–5.0

Variance

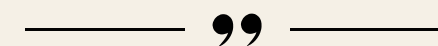
Moderate–High

Reflection

Hinduism's leadership offers clear, spiritually grounded direction marked by competence and approachability. Trust is present, and guidance is steady. However, relational and spiritual care within the leadership team tends to be occasional rather than regular. Establishing consistent spaces for encouragement will strengthen resilience and unity.

Encouragement

Your leadership is clear and spiritually grounded. The next step is rhythm – build regular spaces for prayer, encouragement, and relational connection among the team.



Servant-hearted leadership nurtures trust and credibility – where humility guides, integrity protects, and shared decision-making brings peace.





Diversity & Inclusivity

The breadth of the network's representation (across cultures, ethnicities, genders, denominational traditions, and generations) and how intentionally it includes and values all voices in unity.

STATUS



Thriving

Average Score

3.64

Range

1.0–5.0

Variance

High

Reflection

Diversity is embraced as a gift from God, enriching the network's mission and reflecting His kingdom design. Members experience honour, belonging, and mutual respect. The next area of growth is intentional investment in younger leaders, ensuring mentoring pathways are clear and consistently practised.

Encouragement

Your culture of honour is strong and life-giving. The next step is intentional mentoring – create clear pathways for younger leaders to grow and contribute.

— — — — — “ — — — — —

When every culture, generation, and voice is valued, the network reflects the fullness of Christ's body in mission.



Additional Reflections



Conflict Resolution

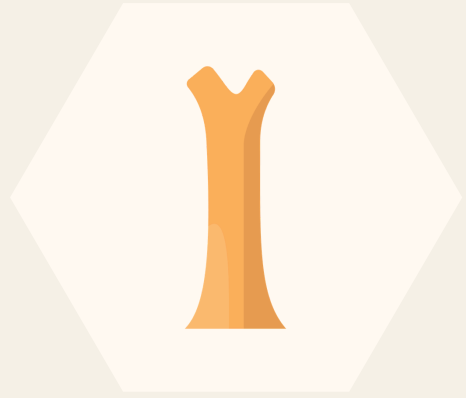
If a disagreement arose, most envision **healthy dialogue**, though some are **uncertain** or expect a **hierarchical intervention** – indicating mixed confidence in collaborative decision-making.



Network Diversity

Diversity in the network is mostly **geographic**, although representation of **cultural/ethnic** as well as **theological** diversity is also recognised. There is a need to have more **generational** and **professional** inclusivity and to diversify across **gender** lines.





Collaborative Action & Engagement

Trusting partnerships and clear
communication, upholding unity





Collaborative Engagement

The degree to which the network fosters participation, trusting partnerships marked by shared initiatives, mutual support, and unified pursuit of its mission.

STATUS



Living

Average Score

3.52

Range

1.8–5.0

Variance

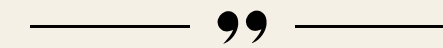
High

Reflection

Relational trust and encouragement are present, offering a healthy foundation for collaboration. However, engagement across the network is uneven, and not all voices consistently shape planning. Membership identity lacks clarity, and strategic cooperation remains occasional. Stronger structures and follow-through are needed to strengthen collaboration.

Encouragement

Your relationships are a gift. The next step is clarity – define active membership, strengthen communication structures, and establish shared initiatives with accountability.



True collaboration is born from trust; when members serve one another, and shared mission flourishes beyond individual strength.





Communication

The effectiveness of communication within the network (between members and leadership) and to external stakeholders (to the broader Lausanne Movement, church, and public).

STATUS



Thirsty

Average Score

3.02

Range

1.2-4.5

Variance

High

Reflection

Communication tools are in place, and efforts toward accessibility are visible, though language barriers occasionally limit full participation. Messaging around vision lacks consistent clarity and reach, and internal communication remains largely one-directional.

Encouragement

Your communication is forming but uneven. The next step is consistency – clarify core channels, strengthen language accessibility, and build reliable two-way feedback rhythms to share ownership across the network.



Healthy networks speak with clarity and grace – amplifying vision, inviting participation, and ensuring every member is heard.



Additional Reflections



Collaborative Relationships

There is a growing sense of collaborative potential within the network. Most people could name 3 people they could collaborate with on a shared initiative.



Communication Channels

Information flows mainly through Email, but also WhatsApp – however some express that they often miss important network news. The lines of communication need clarification.





Shared Learning & Content

Thoughtful theological reflection,
missional leadership, motivating and
equipping the outworking of the vision





Content & Training

Does the network equip others through quality, theologically grounded resources and training that meet real missional needs in diverse contexts?

STATUS



Living

Average Score

3.29

Range

1.3–5.0

Variance

High

Reflection

Training and content are responsive to real missional needs and demonstrate care for both cultural relevance and theological integrity. However, resource quality and output vary, and connections to the network's broader mission are not always clear. More consistent storytelling and stronger theological focus will deepen coherence and impact.

Encouragement

Your content and training is practical and thoughtful. The next step is focus – strengthen biblically grounded resource development and regular storytelling rhythms to clarify impact.



Networks that equip others through biblically grounded learning multiply wisdom and strengthen the church for global witness.





Thought Leadership

The extent of the network's contribution to biblically faithful, Spirit-led insight that shapes global mission thinking and guides others in their practice.

STATUS



Living

Average Score

3.26

Range

1.7-4.8

Variance

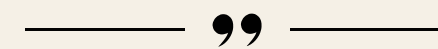
High

Reflection

Fresh theological and missional ideas are emerging, and occasional invitations to speak signal growing credibility. However, contributions are not yet widely recognised, and resources tend to remain within internal circles. Outreach and engagement pathways are inconsistent, limiting broader influence and visibility beyond the network.

Encouragement

Your insight is beginning to surface. The next step is visibility – strengthen dissemination and create simple, regular invitations for others to engage.



Spirit-led thought leadership inspires the church to think deeply, act courageously, and pursue mission with prophetic clarity.



Additional Reflections



Most Shared Content

[Sharing Jesus with Hindus: Global Witness Among Hindu Diasporas](#)
1980s LOP

Many could not name resources, suggesting that there are not yet clear Lausanne resources that define the network.



The Network's Voice

There are mixed views as to Hinduism's voice, from **emerging but growing, clear and respected**, to **only occasionally heard** and **not yet visible**.



Integration & Impact

Shared initiatives marked by innovation and relevance, achieving tangible global impact





Missional Impact

The degree to which the network makes a meaningful spiritual and strategic difference in fulfilling its mission.

STATUS



Thirsty

Average Score

2.90

Range

1.3–4.8

Variance

High

Reflection

There are signs of tangible impact, with initiatives bringing meaningful change in communities. However, evaluation remains inconsistent, and data and storytelling provide only a partial picture of influence. Spiritual and strategic outcomes are not regularly reviewed together, limiting clarity around the network’s fuller, Spirit-led impact.

Encouragement

Your initiatives are bearing fruit. The next step is structure – establish simple rhythms for gathering stories, tracking data, and reviewing both spiritual and strategic outcomes together.



Healthy networks bear visible fruit – lives changed, communities renewed, and the gospel taking root where it was once absent.





Adaptability & Innovation

The ability to adjust and innovate in response to changing circumstances or challenges, maintaining effectiveness and mission faithfulness over time.

STATUS



Living

Average Score

3.36

Range

1.7-4.7

Variance

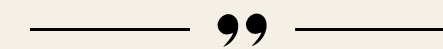
Moderate-High

Reflection

The network shows openness and agility, responding to challenges with maturity and adapting to changing realities. Creativity and experimentation are present, though often informal. Feedback and discernment are not yet consistently embedded in innovation processes, and there is the need for clearer Spirit-led integration to enhance adaptive strength.

Encouragement

Your adaptability is evident. The next step is intentionality – normalise feedback and make prayerful discernment central as new approaches are developed.



Spirit-led innovation keeps the network fresh – ready to respond with courage, creativity, and faith to changing mission needs.



Additional Reflections



Network Impact

The most prevalent impact is **missional awareness** and **personal transformation**, although there were mixed views as to Hinduism impacting **communities** or bringing **change within the church**.



Innovation Culture

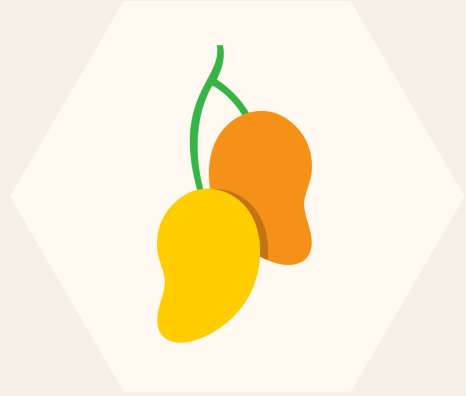
Most common responses:

🚲 Bicycle – Slow but steady, powered by a few

🌍 Lost Van – Equipped, but unclear direction

🚣 Canoe – Collaborative, but drifting

The network sees itself as committed and collaborative, yet carried forward by a small core and still seeking clearer direction.



Resilience & Sustainability

Resources and generational continuity, ensuring longevity and multiplication beyond the network





Resources

The ability of the network to steward finances, people, and knowledge with transparency and interdependence, ensuring sustainability for its calling.

STATUS



Thirsty

Average Score

3.07

Range

1.5–4.5

Variance

Moderate–High

Reflection

Financial stewardship is marked by integrity and trust, and knowledge is shared generously across the network. Yet resource contribution and participation remain uneven, and mentoring of younger leaders lacks consistent structure. Greater interdependence and intentional investment will strengthen sustainability and shared ownership.

Encouragement

Your integrity in stewardship is evident. The next step is shared responsibility – foster interdependent resource contribution and dedicate structured time and budget to mentoring younger leaders.

— — — — — “ — — — — —

Stewardship done in unity – sharing time, gifts, and finances – builds interdependence that sustains mission beyond any one generation.





Multiplication

The extent to which the network cultivates leaders, initiatives, and contextual expressions that carry the vision forward with generational continuity and global reach.

STATUS



Living

Average Score

3.40

Range

1.0–4.3

Variance

High

Reflection

New initiatives are emerging with purpose, and there is a clear commitment to discipleship and leader development. However, younger leaders are not yet consistently empowered into meaningful leadership roles, and replication of the vision remains uneven. More intentional mentoring and local ownership will strengthen long-term multiplication.

Encouragement

Your growth is encouraging. The next step is intentional investment – equip emerging leaders for real responsibility and support local adaptation of the vision for lasting multiplication.



When leaders reproduce leaders and vision gives birth to new expressions, the network ensures lasting fruitfulness for God's glory.



Additional Reflections



Resources

Most feel confident that the network can be sustained over the next year, yet the greatest present needs are:

Financial support

Volunteers or leaders

Access to knowledge or data

Administrative systems



Multiplication and Growth

Most common responses:

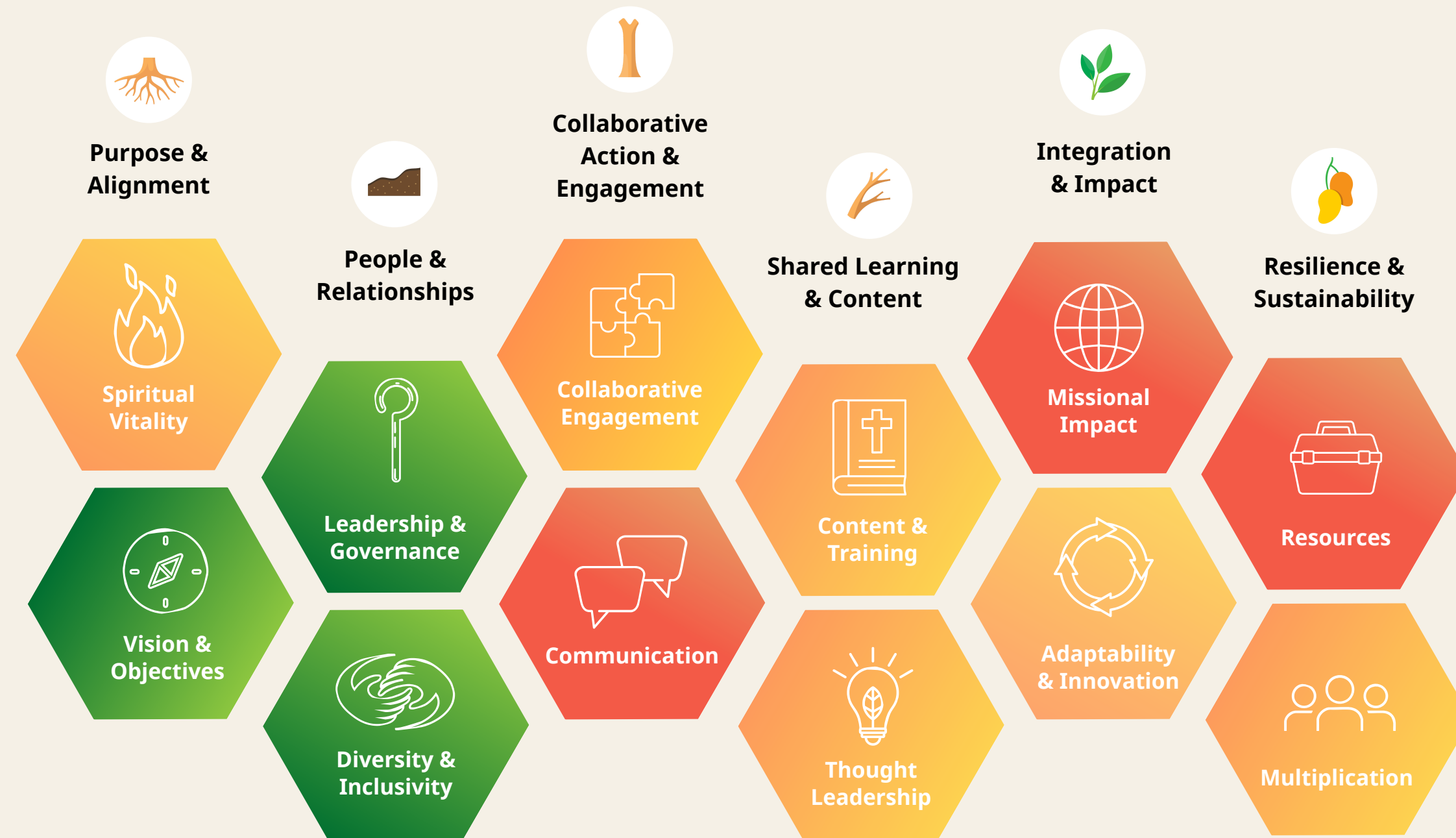
💧 Trickling Stream – Small beginnings

🧊 Frozen – Stalled

Multiplication is hopeful yet fragile. There's a longing for breakthrough, recognising that real change is needed for growth.



Visual Dashboard Summary



THRIVING AREAS
3

LIVING AREAS
6

THIRSTY AREAS
3

Suggested Next Steps



Evaluate Holistic Impact

Evaluate impact using both qualitative stories and quantitative data.

Track Strategic Outcomes

Define and track both spiritual and strategic outcomes for your initiatives.

Identify Impact Drivers

Identify areas where your work has made a tangible difference – and why.



Share Vision Regularly

Schedule regular sharing of your network's vision and updates with members and the wider church.

Maintain Clear Channels

Use consistent and clear channels to keep members informed and engaged.

Coordinate Communication Efforts

Appoint someone to help coordinate and strengthen communication efforts.



Mobilise Network Resources

Invite members to contribute time, skills, and finances to sustain the network's mission.

Invest in Emerging Leaders

Prioritise investment in the growth and development of younger leaders.

Assess Resource Needs

Develop a rhythm for regularly identifying and addressing resource needs.

Voices of Reflection

Final recorded thoughts

Small Beginnings, Growing Network

"We thank God for small beginnings... we are just growing as a network."

The network recognises its early stage with gratitude.

Trusted Global Voice

"Our collective strength lies in being globally recognised as a trusted voice and champion."

The network builds on its credibility and experience among Hindu communities worldwide.

Need for Accessible Resources

"We recognise the need to develop reliable and accessible resources."

The network is aware that churches and smaller groups need practical training and mobilisation tools, and therefore is relying on strengthening its relationships and communication.



In closing...

The Hinduism Issue Network shows encouraging growth shaped by unity and a desire to serve faithfully together. Your commitment to shared mission is evident. May the Lord deepen your rhythms of prayer, clarify your direction, and bring enduring fruit as you faithfully serve Him.

*“...that they may be called oaks of righteousness,
a planting of the Lord for the display of his splendour.”*

- Isaiah 61:3b

